

# DYSLEXIE FONT FOR DYSLEXICS

## WHAT IS DYSLEXIE FONT?

Dyslexie font has developed a typeface especially for people with dyslexia called Dyslexie. People with dyslexia have problems distinguishing some letters.

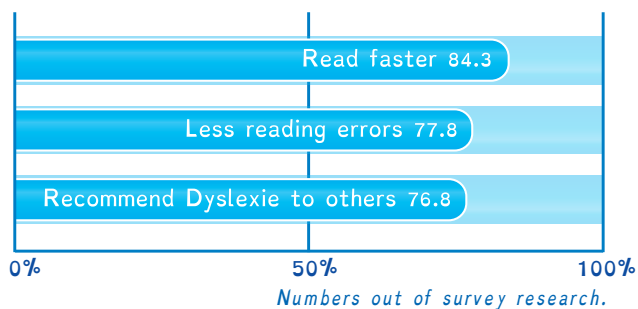
People with dyslexia sometimes turn, mirror and switch letters whilst reading. The Dyslexie typeface targets these problems by altering the shape of the letters so they are clearly different from any other letter. As well as this the spaces between the letters are improved and capitals and punctuation are bolder so people with dyslexia don't read words or sentences together any more.

## RESEARCH

Representative research among many dyslectics has now shown that the font actually helps them with reading texts faster and with fewer errors. The positive results of Dyslexie font have also been confirmed by independent research, conducted by scientists at the University of Twente 2010 and in 2013. Next these researches there was also a survey research.

*Research: Survey Dyslexie 2012*

*Research on daily users, teachers and students. by: Judith van de Vrugt and Annalotte Ossen (2012)*



The questions were asked to adults and pupils who use the font, and to the parents, teachers and dyslexia therapists of children that work with the font. In total, 250 people completed the survey.

01.



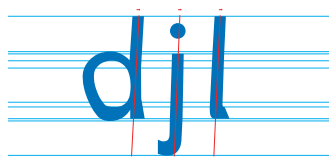
The letters' 'centre of gravity' is lowered, so that it is less easy to erroneously see it upside down.

02.



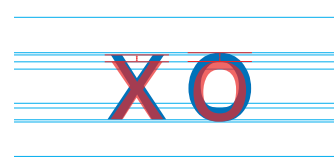
The openings in the letters are bigger, clarifying and distinguishing the letters.

03.



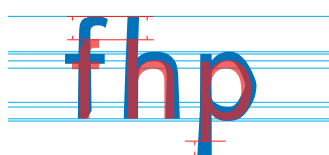
Some letters are slightly slanted. This further increases the differences between letters.

04.



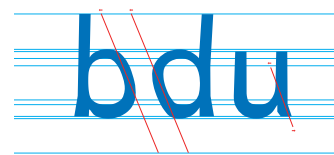
By raising the x-axis, space within the letters is increased, making them more easily recognizable.

05.



By lengthening the ascender and descender the difference are emphasized.

06.



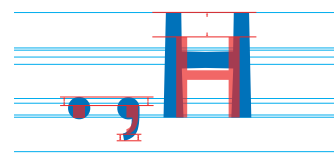
Slanting certain elements of a letter further distinguishes them from others.

07.



Differing heights within the letter gives every letter its own character.

08.



By slightly thicker capital letters and punctuation, a reader will be less likely to miss the point where one sentence and a new one begins.

## WHAT CAN YOU DO WITH DYSLEXIE?

Through our server you can quickly and easily install the font **Dyslexie**. Once installed, you can use the font in all your Office applications. In addition, you can use **Dyslexie** in almost any software that allows you to select fonts. A prime example is setting your browser font to **Dyslexie** so all websites are displayed in the font. Or simply process and read any text in any form, such as presentations, newsletters, reports, et cetera.



Apple

Windows



When reading a text in the font **Dyslexie**, people with dyslexia have a lot less trouble and fewer errors are made. Steadily, the font **Dyslexie** has acquired a large number of enthusiastic users, both private and business. Reading is faster, easier and above all more enjoyable.

## REFERENCES

The following companies and organizations are already working and not without reason, with the **Dyslexia** font.



## OVERVIEW

	PUBLISHERS	BUSINESS	EDUCATION	PRIVATE	SITE PLUGIN
<b>TYPEFACE</b> Dyslexie Regular A	✓	✓	✓	✓	
Dyslexie Bold A Dyslexie Italic A Dyslexie Bold Italic A	✓	✓	✓		
<b>MANUAL</b> Installation on a computer and settings in the browser.	✓	✓	✓	✓	
Installation on a network and text-treatment.	✓	✓	✓		
<b>DYSLEXIA LAYOUT</b> Personal guidance and informal advice for a dyslexia friendly layout.	✓				
<b>YOUR SITE IN DYSLEXIE FONT</b> Guide to install the plugin. (the plugin is maintenance free)					✓